



Sydney, NSW
91 Liverpool Street

1
BED

1
BATH

1
CAR

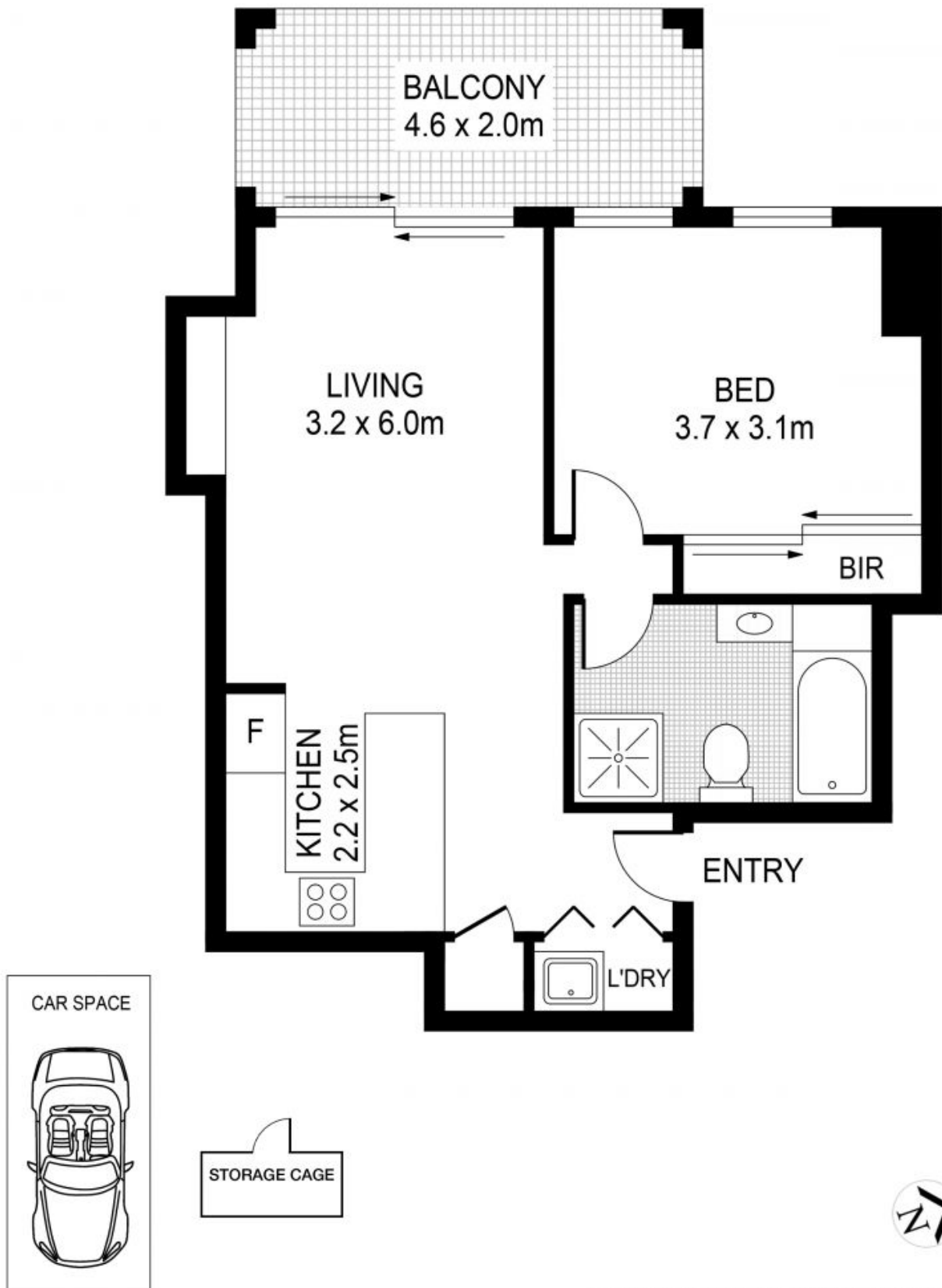


This spacious and well-lit one bedroom apartment is located on Level 35 of the iconic World Tower building.
The generous floorplan, opening to your own winter garden with city views, great for outdoor use or an extra study room.
Currently getting great rentals that suits astute investors.

Features:

- Clever floorplan that doesn't waste any unwanted space
- Spacious double sized bedroom with built in robes
- Separate shower and bathtub
- Modern kitchen with granite benchtop and gas cooking

Council Rates: \$272/qtr (approx)
Water Rates: \$2,328/qtr (approx)
View: Sat, 25 May 2019 @11:00 am - 11:45 am
Contact: Peter Wong
02 9281 9999
0411 218 238
Peter Wong
02 9281 9999
0411 218 238
Type: Apartment
<https://www.pgmode.com.au>



PLANS SHOWN ONLY INDICATIVE OF LAYOUT. DIMENSIONS ARE APPROXIMATE.

3508-91 Liverpool St

Plans shown are only indicative of layout. Dimensions are approximate.



永誠地產
Raymond Hung

Sydney, NSW
91 Liverpool Street