



**Tempe, NSW**  
15-25 Edgar Street

**3** BED  
**3** BATH  
**2** CAR

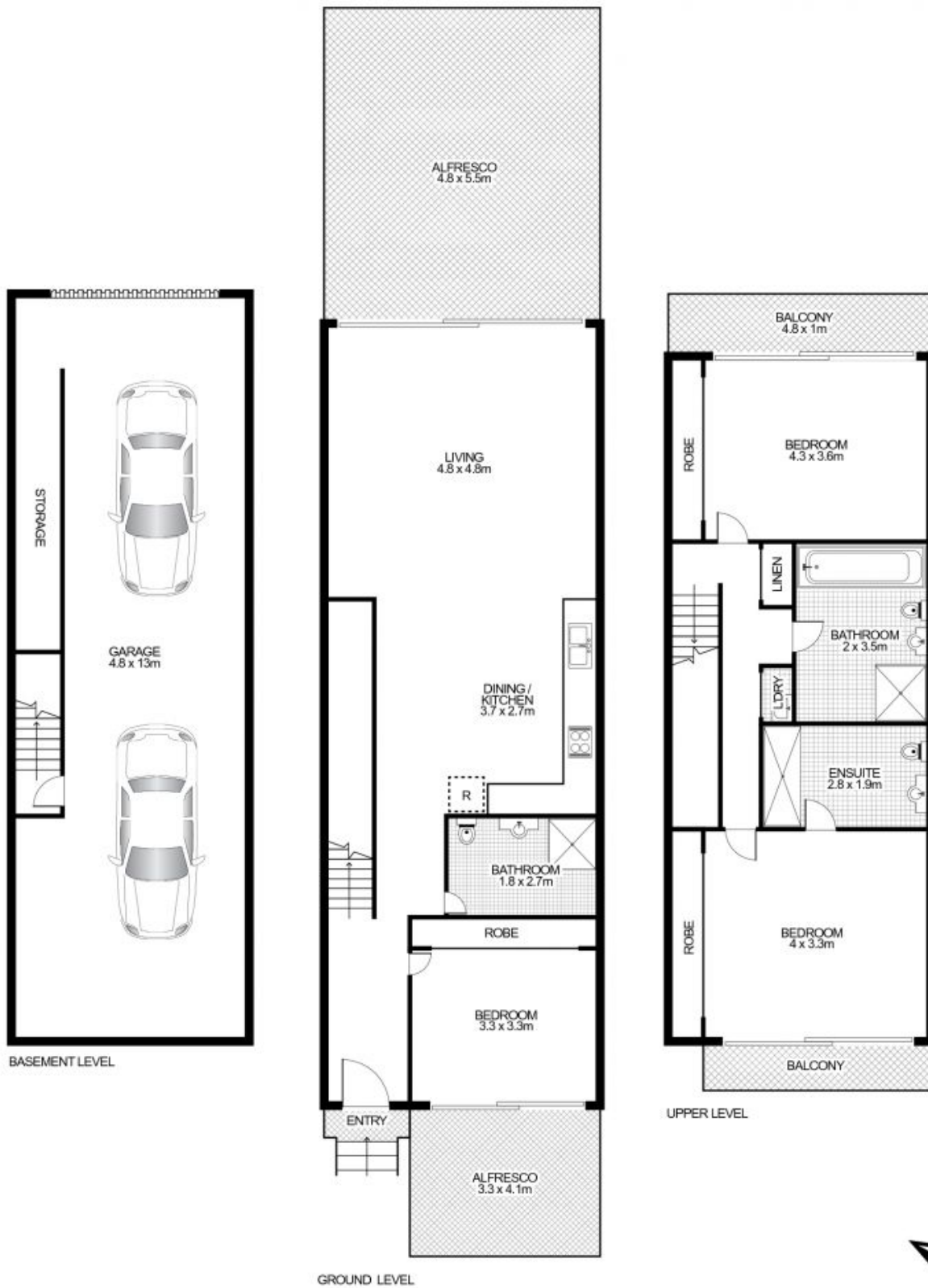


Located in a quiet cul-de-sac and surrounded by nearby parklands and Cooks River cycle-ways, this three-level executive residence in the 'The Quarry' offers style and sophistication with convenient access to public transport and schools. Designed by the award-winning Hone Construction Group and Benson McCormack Architect duo, this townhouse is appointed with high quality finishes and generous house-like proportions throughout. Ready to move straight in!

Upper Level -

- \* Two king-sized bedrooms with generous built-in wardrobes
- \* Individual balcony access equipped with privacy shutters
- \* Two designer-appointed bathrooms, one with bath-tub

**Council Rates:** \$302/qtr (approx)  
**Water Rates:** \$807/qtr (approx)  
**Contact:** Michael Kwok  
 02 9281 9999  
 0416 016 728  
 Peter Wong  
 02 9281 9999  
 0411 218 238  
**Type:** Townhouse  
**Sold Date:** 04/09/2018  
**Land:** 246Square Metres  
<https://www.pgmode.com.au>



## 15-25 Edgar Street, TEMPE



Plans shown are only indicative of layout. Dimensions are approximate.

This floor plan is intended as a guide only. Layout dimensions are approximate only. No representations or warranties of any nature whatsoever are given or intended. Any person using this information should rely on their own

**Tempe, NSW**  
15-25 Edgar Street